

FR Series**Fire Rated Wall Access Doors**

Doors are Fire Rated by Underwriters Laboratories Inc., for 1-1/2 hours, "B" Label, and meet ANSI-UL 10B standard. Door has a heavy duty spring closer to assure positive latching when panel closes. ***This door is for wall installation only.***

Door and Frame are fabricated from 16 gage, galvanized steel with a prime coat finish.

Door has a heavy duty spring to assure positive latching.

Frame is equipped with both masonry anchors and bolt holes to facilitate installation in all types of wall construction.

Concealed Hinge operates completely out of sight so that only the door and frame is visible.

Exterior Latch is recessed and is operated using a ring attached to the sliding bolt.

Interior Latch Release Slide is included enabling door to be opened from the inside.

Finish is a prime coat suitable for painting.

Guide Specification

Provide Elmdor® FR Series, Fire Rated Access Doors (specify model number and options). Access door and frame shall be fabricated from 16 gage, galvanized steel with a prime coat finish. Hinge shall be concealed type. Door shall have a heavy duty spring to provide positive latching when closed, and an interior latch release slide enabling door to be opened from the inside. Exterior latch shall be recessed and operated using ring attached to the sliding bolt. Finish shall be a prime coat suitable for painting.

[Click here to Online Product Page and Pricing](#)



Member of U.S. Green
Building Council

FR

Revised: 1/19/12

Recyclable
Product





MODEL NUMBER AND OPTIONS SELECTION

BASE MODEL NUMBER

☐ FR Fire Rated Access Door

Suffix Options

☐ -CL

Cylinder Lock (one per door)

☐ -SS

Stainless Steel Construction.

(Type 304 No 4 Finish Satin Finish)

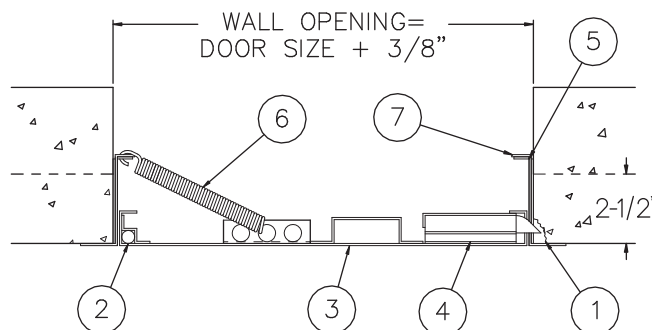
STANDARD AVAILABLE SIZES

Special sizes available upon request.

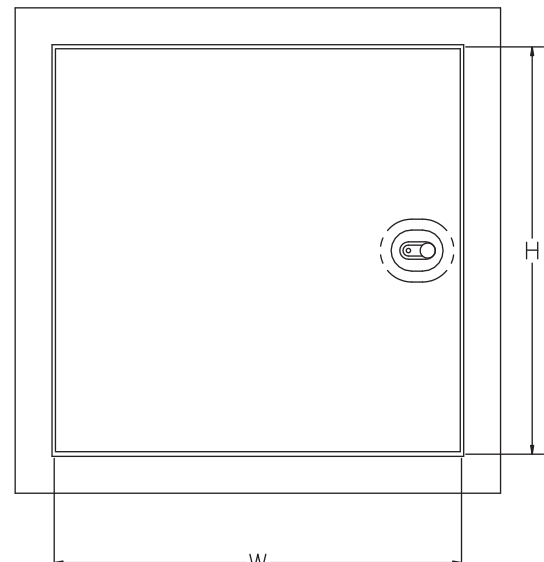
| NOMINAL DOOR SIZE (W X H) | WALL OPENING (minimum required) | LATCHES | WEIGHT |
|---------------------------------|------------------------------------|---------|-----------|
| FR 8" x 8" | 8-3/8" x 8-3/8" | 1 | 6 lbs. |
| FR 10" x 10" | 10-3/8" x 10-3/8" | 1 | 7.5 lbs. |
| FR 12" x 12" | 12-3/8" x 12-3/8" | 1 | 9 lbs. |
| FR 12" x 18" | 12-3/8" x 18-3/8" | 1 | 10.5 lbs. |
| FR 12" x 24" | 12-3/8" x 24-3/8" | 1 | 13 lbs. |
| FR 14" x 14" | 14-3/8" x 14-3/8" | 1 | 10 lbs. |
| FR 16" x 16" | 16-3/8" x 16-3/8" | 1 | 12.5 lbs. |
| FR 18" x 18" | 18-3/8" x 18-3/8" | 1 | 15 lbs. |
| FR 20" x 20" | 20-3/8" x 20-3/8" | 1 | 18 lbs. |
| FR 22" x 22" | 22-3/8" x 22-3/8" | 1 | 22 lbs. |
| FR 22" x 30" | 22-3/8" x 30-3/8" | 2 | 28 lbs. |
| FR 24" x 24" | 24-3/8" x 24-3/8" | 2 | 24.5 lbs. |
| FR 24" x 36" | 24-3/8" x 36-3/8" | 2 | 33 lbs. |
| FR 24" x 48" | 24-3/8" x 48-3/8" | 2 | 42 lbs. |
| FR 30" x 30" | 30-3/8" x 30-3/8" | 2 | 33.5 lbs. |
| FR 32" x 32" | 32-3/8" x 32-3/8" | 2 | 35 lbs. |
| FR 36" x 36" | 36-3/8" x 36-3/8" | 2 | 43 lbs. |
| FR 36" x 48" | 36-3/8" x 48-3/8" | 2 | 74 lbs. |

NOTES:

1. CHIP OUT MASONRY TO CLEAR BOLT COVER
2. CONCEALED HINGE
3. DOOR
4. RECESSED LATCH
5. INTERIOR LATCH RELEASE SLIDE
6. CLOSING SPRING
7. FRAME



SIDE VIEW



FRONT VIEW

Click here to Online Product Page and Pricing

SELECTION SUMMARY & APPROVAL FOR MANUFACTURING

| | |
|--|----------------|
| Model Number & Options _____ | Quantity _____ |
| Company _____ | Date _____ |
| Contact _____ | Title _____ |
| Approval for Manufacturing/Signature _____ | |

FR

Revised: 1/19/12